



আস্থা শতভাগ



**OUTDOOR OFF LOAD DISCONNECTORS & BY-PASS SWITCHES**

**DIMENSIONS OF DISCONNECTOR WITH EARTH SWITCH TYPE: ECBE-36**

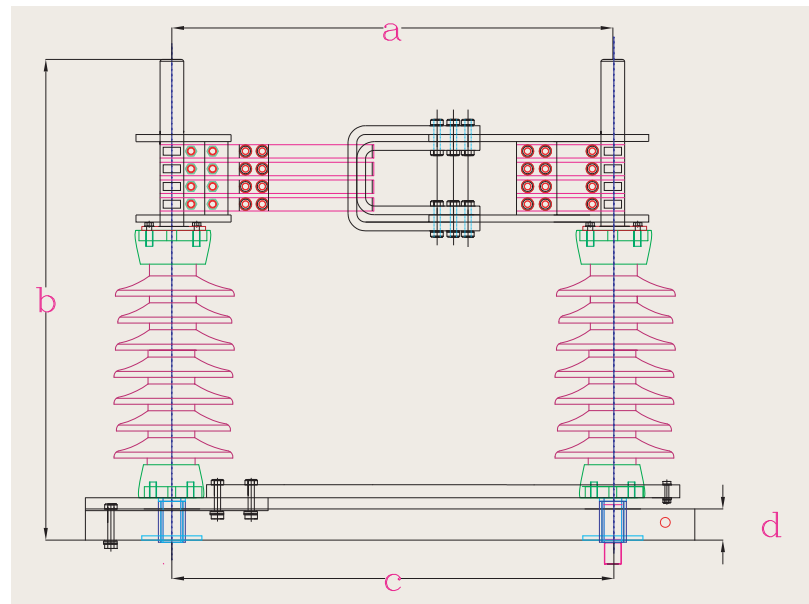


**Centre Break Disconnector with Earth Switch**

Sl. No.	Description	All dimensions are in mm reference only			
		a	b	c	d
1.	36 KV Off-Load fused Isolator	1565	358	508	50
2.	36 KV Isolator with & without earth blade	1020	350	508	50
3.	36 KV Isolator with HRC fuse	1565	372	508	50
4.	36 kV Bus-section Isolator	1020	350	508	50
5.	36 kV PT fused Isolator	770	570	508	45
6.	12 kV Isolator with & without earth blade	720	300	430	45
7.	12 kV Line Isolator with HRC fuse	960	300	430	45
8.	12 kV Bus Section Isolator	720	300	430	45
9.	12 kV PT fused Isolator	525	325	430	45

**BILL OF MATERIAL**

Ref No.	Description	Material
1	Base Channel Hot-Dip Galvanized	MS
2	Insulator	Porcelain
3	Male and Female Blade Assembly	Silver Plated Copper
4	Disconnecter/Earth Switch Operating Drive-Motor/Manual	Aluminium
5	Gang Flat For Main-Hot Dip Galvanized	MS
6	Down Operating Pipe For Main-Nb32-Hot Dip Galvanized	Ms
7	Gang Flat For Earth-Hot Dip Galvanized	MS
8	Down Operating Pipe For Earth-Nb32-Hot Dip Galvanized	MS
9	Assembly Of Free Entry Earth Switch	Structure MS, Contacts Bare Copper
10	Insert For Manual Operating Handle For Main	MS
11	Insert For Manual Operating Handle	MS
12	Earth Fixed Contact	Bare Copper
13	Mechanical Link For Earth Switch Operation	MS
14	Dummy Adopter	Aluminium



**Drawing of Centre Break Disconnector**

## TYPE OF DESIGNATION

Rated Voltage : 12-245KV

Rated normal current : upto 3150 Amps

- Versatile design allowing a wide variety of erection arrangements
- Simple construction, easy to install
- Self-cleaning contacts
- Low operating forces required
- All steel parts hot-dip galvanized.

## DISCONNECTORS

TECHNO manufactures outdoor offload disconnectors of the following types:

- Pantograph - type EPG
- Centre Break- type ECB
- Double Break - type EDB

The disconnector comprise of the following main assemblies:

- The main current carrying parts called as the hamper assembly.
- Support insulators mounted between the current carrying parts and base.
- The bottom base assembly.
- The Operating mechanism box.
- Inter-stack, inter-phase and down operating pipes.
- Earthing switch and its operating mechanism box wherever called for.
- Supporting structure mounted between the base and the ground.

TECHNO manufactures disconnectors with the current carrying parts mainly of aluminium alloy considering the advantages of aluminium alloy over copper for outdoor application.

Disconnectors can be supplied suitable for horizontal upright mounting on support structure or underhung mounting on substation gantry structure and can be manually operated or motor operated type. Disconnectors can also be setup for series, parallel or tandem arrangement.

## PANTOGRAPH TYPE

Pantograph type single pole operated disconnectors, used for current transfer/coupling of buses at two different heights, arranged in tandem are available in following range.

- Rated voltage from 12 kV to 245kV.
- Rated current Upto 3150 Amps.

- Short time current rating Upto 50kA.

## CENTRE BREAK TYPE

Two post rotating centre break design are available in the following range.

- Rated voltage from 12kV to 245kV.
- Rated current Upto 3150 Amps.
- Short time current rating upto 50kA.

## DOUBLE BREAK TYPE

Centre pole rotating double break disconnectors with turn and twist mechanism are available in the following ranges.

- Rated voltage from 12kV to 245kV.
- Rated current Upto 3150 Amps.
- Short time current rating upto 50 kA.

## CONTACTS

For pantograph type disconnectors, the current transfer contacts consist of the fixed trapeze type contact mounted directly on the top bus and moving contacts made of copper strips mounted on the pantograph moving blade.



## Fixed trapeze contacts

In case of Centre break type, the current transfer takes place through the reverse loop silver plated copper female finger contacts and silver plated copper male contact rod.

In case of the double break type, the current

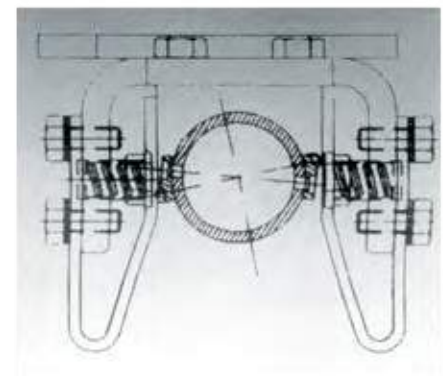


Male contact stem



Female contact fingers

transfer takes place through the self wiping turn & twist type contact. This again consists of the silver plated copper fixed finger contacts and the moving silver plated copper contacts mounted on the rotating arm of the disconnector.



Turn & Twist main contacts

### PANTOGRAPH DISCONNECTORS:

Type : EPG

- Very low civil engineering profile
- Trapeze contact fixing to suit upper bus arrangement
- 4 point contact
- Available for flexible/rigid busbar layouts
- Current transfer through multifinger hinge contacts
- Individual pole operation
- Structure to suit requirements

Dimensions in mm (reference only)		
a	b	c
2635	4200	8500
2692	600	8755

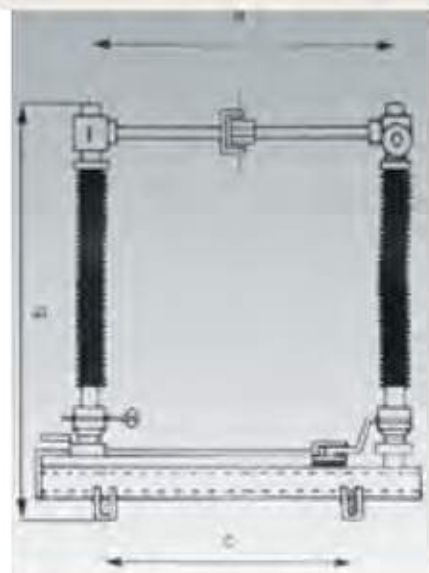


### CENTRE BREAK DISCONNECTORS :

Type : ECB

- Very low operating torque
- Self wiping contacts.
- Simultaneous operation of 3 poles by single operating mechanism up to 245kV.
- Structure to suit requirements.

Dimensions in mm (reference only)		
a	b	c
490	305	315
700	930	500
1700	2125	1200
2600	2861	2000

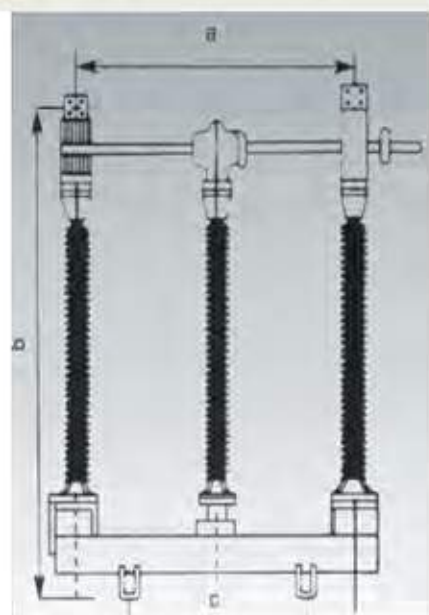


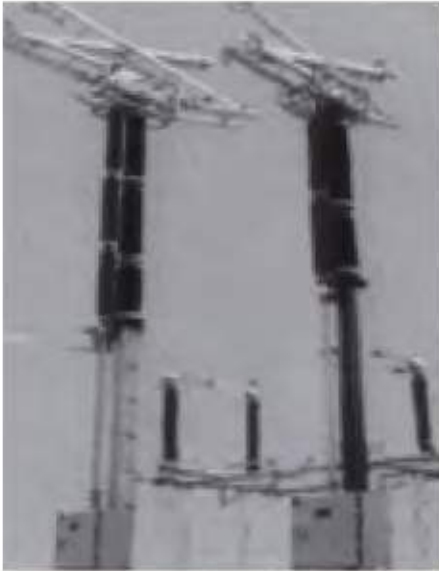
### DOUBLE BREAK DISCONNECTORS :

Type : EDB

- Turn and Twist contacts
- Vertical/Horizontal terminal take off.
- Totally enclosed actuator assembly.
- Simultaneous operation of 3 poles by single operating mechanism up to 245 kV.
- Structure to suit requirements.

Dimensions in mm (reference only)		
a	b	c
490	305	350
750	865	500
2130	2112	150
3200	2848	2500





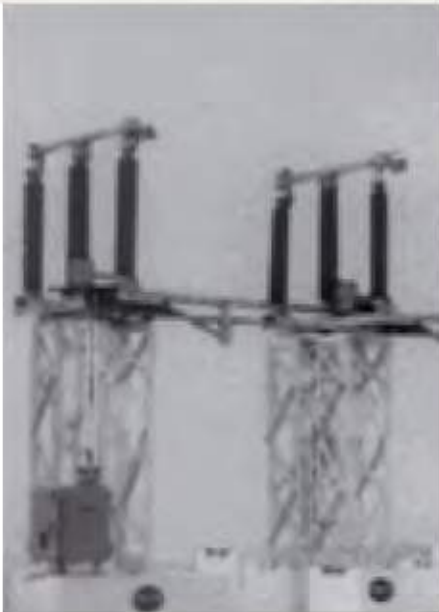
**PANTOGRAPH Disconnectors EPG**

Rated Voltage	Rated Current	Rated short Time	Rated peak short current	Power Frequency Withstand voltage 50 Hz.		Lighting impulse Withstand Voltage		Switching impulse Withstand Voltage	
		Current	Circuit current	1 min	across	1.2/50mS	across	250/2500mS	across
				To earth	isolating distance	To earth	isolating distance	To earth	isolating distance
kV	A	kA	kA	kV	kV	kV	kV	kV	kV
12	1250	25	62.5	28	32	70	80		
36	1250	31.5	78.5	70	80	170	195		
36	1600	25	62.5	70	80	170	195		
36	2000	31.5	78.5	70	80	170	195		
36	2500	31.5	78.5	70	80	170	195		
145	2000	40	100	275	315	650	750		
245	3150	40	100	460	530	1050	1200		



**CENTRE BREAK DISCONNECTORS ECB**

Rated Voltage	Rated Current	Rated short Time	Rated peak short current	Power Frequency Withstand voltage 50 Hz.		Lighting impulse Withstand Voltage		Switching impulse Withstand Voltage	
		Current	Circuit current	1 min	across	1.2/50mS	across	250/2500mS	across
				To earth	isolating distance	To earth	isolating distance	To earth	isolating distance
kV	A	kA	kA	kV	kV	kV	kV	kV	kV
12	1250	25	62.5	28	32	70	80		
36	1250	31.5	78.5	70	80	170	195		
36	1600	25	62.5	70	80	170	195		
36	2000	31.5	78.5	70	80	170	195		
36	2500	31.5	78.5	70	80	170	195		
145	3150	40	100	275	315	650	750		
245	3150	40	100	460	530	1050	1200		



**DOUBLE BREAK DISCONNECTORS EDB**

Rated Voltage	Rated Current	Rated short Time	Rated peak short current	Power Frequency Withstand voltage 50 Hz.		Lighting impulse Withstand Voltage		Switching impulse Withstand Voltage	
		Current	Circuit current	1 min	across	1.2/50mS	across	250/2500mS	across
				To earth	isolating distance	To earth	isolating distance	To earth	isolating distance
kV	A	kA	kA	kV	kV	kV	kV	kV	kV
12	1250	25	62.5	28	32	70	80		
36	1250	31.5	78.5	70	80	170	195		
36	1600	25	62.5	70	80	170	195		
36	2000	31.5	78.5	70	80	170	195		
36	2500	31.5	78.5	70	80	170	195		
145	3150	40	100	275	315	650	750		
245	3150	40	100	460	530	1050	1200		



**DESCRIPTION**

The disconnectors consist of separate poles which can be arranged for single-pole operation or linked together by operating rods to form 2 or 3 pole units. Each pole consists of a base frame with bearings, post insulators and current carrying parts (conductor arms) with contacts and terminals.

**BASE FRAME**

For all sizes up to 245kV, the base frame is of welded design and has minimum four fixing holes. The base frame of all type of disconnector consists of a channel section and has minimum four fixing holes. On this base frame bearings are fixed and on these bearings the post insulators are mounted. A rod suited under the base frame connects the bearings, allowing the insulators to be rotated together.

**EARTHING SWITCHES**

Earthing Switch can be supplied for mounting as an integral part of the

disconnector or for separate mounting as an independent unit operated either by a manual or motor operating mechanism.

The earthing switch consists of a fixed contact made of silver plated copper mounted on the hamper assembly and silver plated moving contacts mounted on the moving arm of the earth switch blade.

The earth switches are designed for short time withstand current of upto 40kA for 3 seconds.

The earth switches are provided with counterbalancing weights to ensure smooth operation during their opening.

**OPERATING MECHANISM**

Different operating mechanisms can be supplied based on the customer requirements. Currently the following operating mechanisms are offered.

- Manually operated mechanism.
- Manually operated geared mechanism
- Motor operated mechanism

Motor operated mechanisms are also provided with emergency manual operation for use in case of power failure or for maintenance.

The mechanisms are housed in cabinets made of sheet steel or aluminium.

Auxiliary switches having silver plated copper contacts with positive wiping action with adequate number of NO and NC contacts and long wiping contacts as per specific requirements of the customer can be provided.

Suitable terminal blocks made of highly non inflammable thermosetting plastic are provided for terminating control and auxiliary wiring.

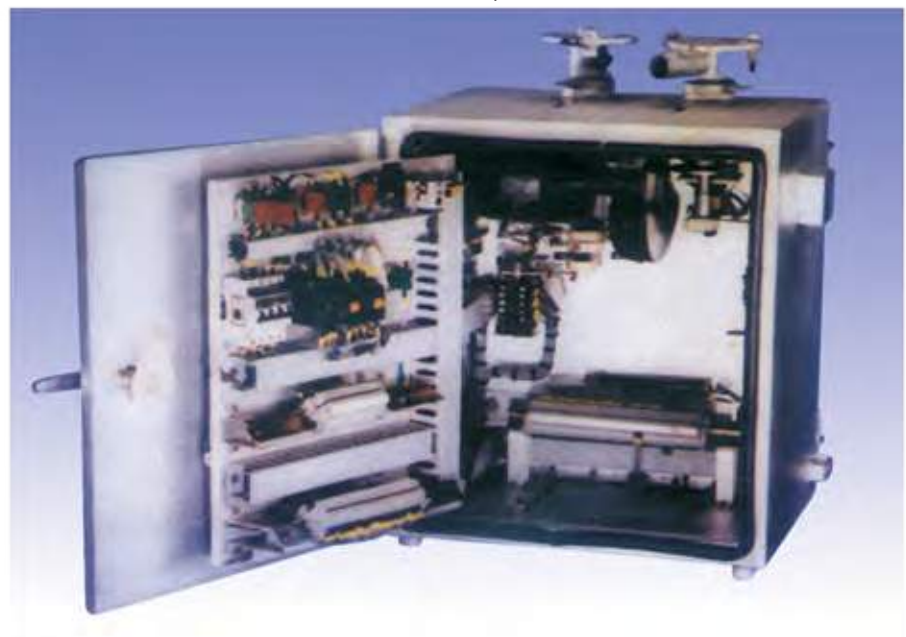
Front door of the operating mechanism box is provided with good quality gaskets which on compression, when the door is closed ensures high degree of protection against polluted atmosphere. All the sheet steel boxes undergo metal treatment before they are taken for powder coating.

**INSULATORS**

A wide range of insulators, meeting the requirements of IEC-168 of the stack type are available with various cantilever strengths, creepage distances and insulation levels to meet the customer specifications.



Earth Switches



Operating mechanism box

### TERMINAL CONNECTORS

Terminal connectors of rigid or flexible type suitable for horizontal/vertical take offs offered to meet specification.

The connector is cast with aluminium alloy and designed so that the joint runs cooler than the associated busbars.



**Rigid type terminal connector**



**Flexible type terminal connector**

### INTERLOCKS

Mechanical constructional interlock is provided between the disconnector and earth switch to ensure that the disconnector cannot be closed when the earth switch is closed and vice versa.

An electro mechanical bolt coil interlock is also provided to ensure that disconnector can be closed only after all external interlocking conditions are met.

### INSTALLATION

Disconnectors are delivered in identifiable parts and assemblies. Assembly of Disconnector and commissioning of the same is to be carried out as per the instructions furnished in the erection and commissioning manual supplied along with the equipment.

### MAINTENANCE

These disconnectors offered are virtually maintenance free.

All the bearings provided are sealed for life and need no greasing. All contacts are to be checked and cleaned during annual maintenance.

The electrical components in the operating mechanism are to be checked and appropriately maintained and the gear is to be greased for smooth operation.

### ROUTINE TESTS

Prior to delivery, at our factory, the disconnectors are assembled (without insulators) and following routine tests are carried out as per the relevant standards.

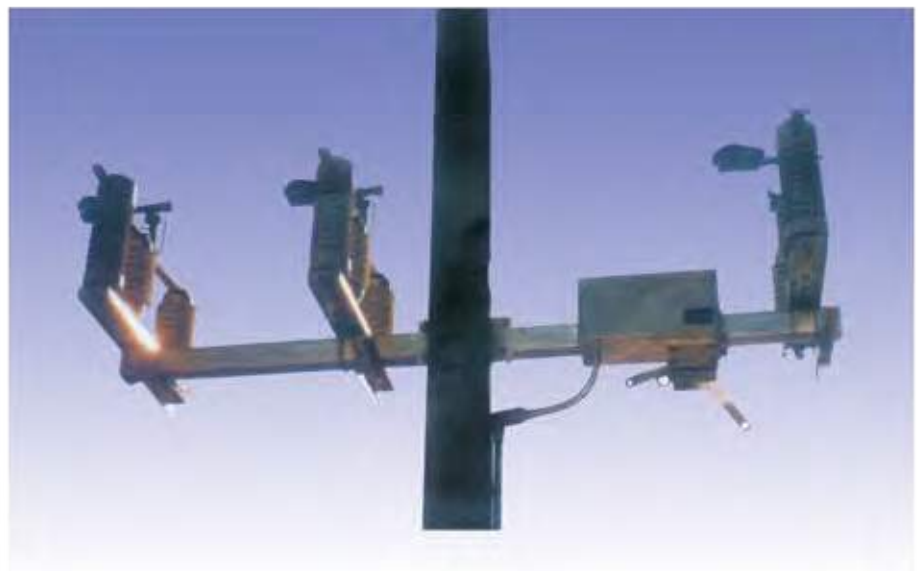
1. Resistance test :
  - Operating mechanism
  - Operating universal joints and links
  - Auxiliary contact
  - Inter Lock
2. Voltage test on :
  - Auxiliary contact
  - Operating mechanism
3. Functional test on :
  - Main circuit and attachment
  - Beam and bearing
  - Earthing switch.

### TYPE-TESTS

Disconnectors offered have been successfully type tested as per IEC 129 and ANSI 37.30 standards at CPRI, India.

### STANDARD

The disconnectors are designed to meet the requirement laid down by IEC 129 and ANSI 37.30.



**Disconnector for rural type distribution line**



Distribution class disconnect

**TYPE :** EDC BY-PASS

**VOLTAGE :** 15.5kV, 25.8kV and 38.0kV

**CURRENT :** 600 and 900 ampere continuous.

**MOMENTARY :** 40,000 amperes momentary.

**BIL :** 110kV, 125 kV and 150kV BIL

**PURPOSE :** Distribution class, single pole, single throw disconnects provide a durable switch for line sectionalizing or isolating equipment on distribution circuits. They are quality constructed to ensure stable high current capability and full thermal capacity under the required duties of today's load and short circuit conditions.

**BLADE DESIGN :** Truss-type construction of formed copper bars has increased width at hinge for greater rigidity, thus minimizing side deflection and maintaining positive alignment when closing switch.

**FORMED STEEL CHANNEL BASE :** Base and backstrap are rugged hot dipped galvanized steel and has a dead-ending hole at each end.

**MINIMUM CURRENT INTERCHANGES :** Uniform conductivity is assured through utilization of hard drawn copper bar in forming one-piece stationary contacts and terminal pads. Design reduces current interchange points to a minimum.

**CONTACTS :** High pressure line type, both clip and hinge ends.

**CONTACT SURFACES :** 600 amperes ratings are silver to copper; 900 amperes, are silver to silver. Silver washers between blade and stationary hinge act as a bearing to assure easy blade movement after long time exposure to contaminated atmosphere.

**TIN PLATED TERMINAL PADS :** Accommodate terminals for either aluminium or copper conductors.

**POSITIVE BLADE LOCK AND PRYOUT :** Blade latch prevents switch opening under high momentary current. Easy opening is assured through pryout assist.

**INSULATORS :** Suitable, characteristics available upon request.

**VERTICAL OR UNDERHUNG MOUNTING :** Easily adaptable to single or double crossarm construction.

**90° BLADE STOP :** Stop can be field removed for 180° blade travel.

**SPECIAL APPLICATION :** Variations to meet specific customer requirements are available upon request.

**OPTION TERMINALS :** Switches can be furnished with any terminal arrangement documented.

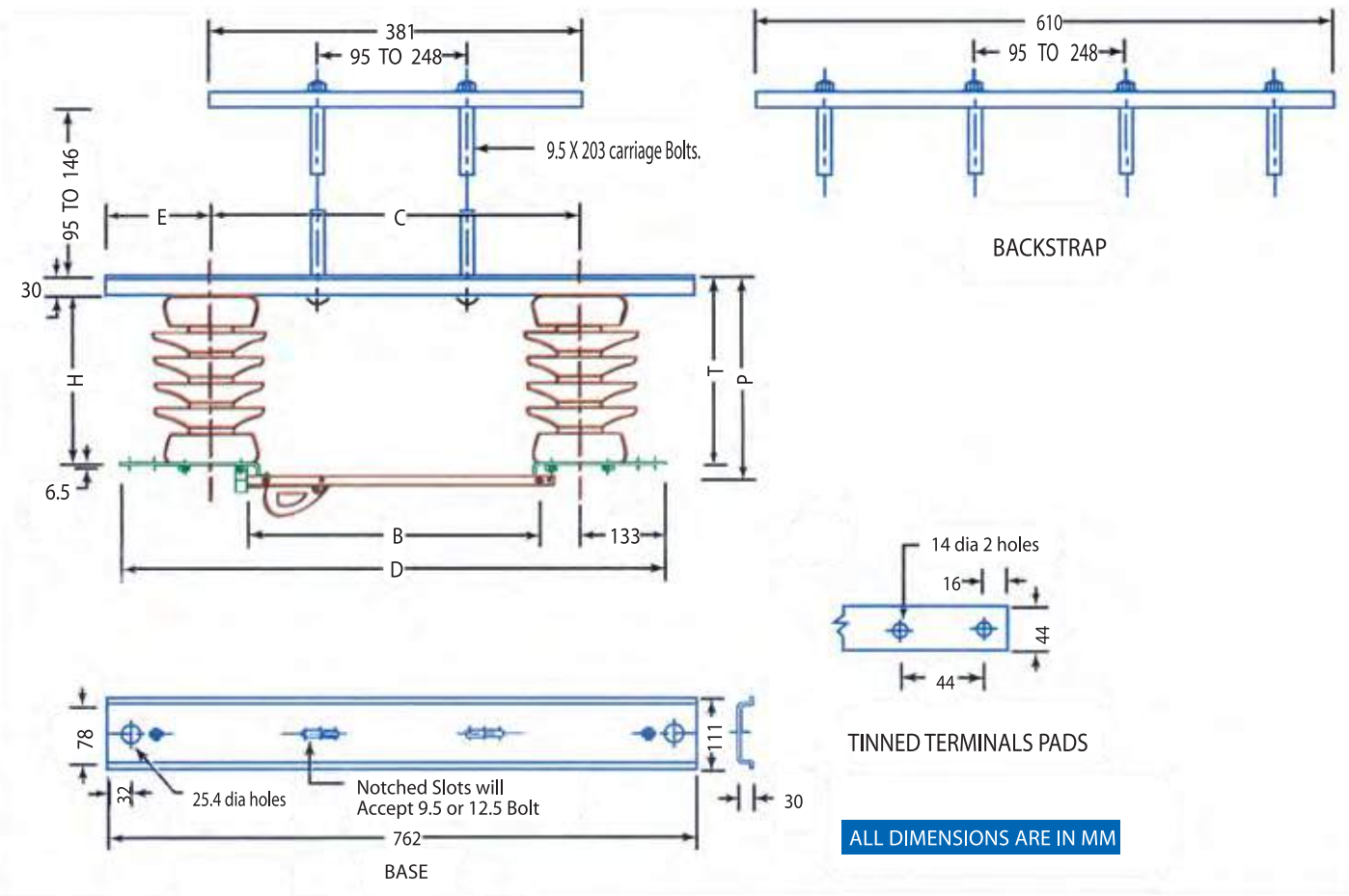
**STAINLESS STEEL LOADBREAK HOOKS :** For use with portable loadbreak tool.

**BENEFITS :**

- Uniform strength and conductivity with no hidden defects.
- Washers act as a bearing assuring easy blade opening, even after long exposure to contaminated atmosphere.
- Assures proper blade alignment during closing.
- Prevent nuisance openings and opening under fault conditions.
- Stop pin can be removed if 180° blade travel is required.
- Accommodates either bronze or aluminium terminals.

**DIMENSION AND ORDERING INFORMATION**

MAX DESIGN KV	BIL KV	MOM KA	ALL DIMENSIONS ARE IN MM REFERENCE ONLY							APPROX. NET WT KG
			B	C	D	E	H	P	T	
15.5	110	40	302	381	648	190	178	248	216	15
25.8	125	40	302	381	648	190	203	273	241	17
25.8	150	40	378	457	724	152	254	324	292	21
38.0	150	40	378	457	724	152	254	324	292	21



**TERMINAL ASSEMBLIES**



TWO-BOLT TINNED BRONZE PARALLEL GROOVE CLAMP



BRIDGE TYPE TWO-BOLT CLAMP



TWO-CAPTIVE STAINLESS STEEL BOLTS



COMPRESSION TERMINAL

**TYPE :** ECR BY-PASS

**FUSED DISCONNECT SWITCH :**

**VOLTAGE :** 15.5kV and 25.8kV

**CURRENT :** 100 ampere or 200 ampere fuseholder rating, 600 ampere disconnect switch rating.

**MOMENTARY :** 28,000 amperes momentary on switch.

**BIL :** 110kV and 150kV BIL

**COMPANION SWITCH :**

**VOLTAGE :** 15.5kV and 25.8kV

**CURRENT :** 600 ampere continuous

**MOMENTARY :** 40,000 amps. momentary on switch

**BIL :** 110kV and 150 kV BIL

**COMBINATION :**

The by-pass disconnect combination consists of :

1. A fuse cutout and a single pole disconnect switch mounted in tandem on a common base.

2. A separately mounted single pole companion disconnect switch.

The fuse cutout provides the by-pass component of the combination. The disconnect switches provide for isolation of the oil circuit recloser.

**PURPOSE :** Fused By-Pass Combinations For Substation Mounting.

**INSULATORS :** Suitable characteristics available upon request

**BASE :** Galvanized structural steel channel.

**TERMINALS :** Two bolt bridge type for #4 Sol. to 666.6 MCM ACSR or 3/4" I.P.S copper are included.

**APPLICATION :** For use when there is maximum requirement for safety and continuity of service. The fused OCR by-pass disconnect combination provides safe isolation of the OCR while maintaining service continuity with a fuse protected circuit.

**FEATURES :** The cutout portion of the combination is a base mounted and will accommodate both 100 ampere and 200 ampere fuse holders. The disconnect switches have 600 ampere continuous rating.

**OPERATION :** With the Oil Circuit Recloser in the closed position (in preparation for maintenance) :

1. Place the fuse holder in hinge clip and close the cutout into the by-pass position.

2. Open the oil circuit recloser.

3. When both disconnect switches are opened, the oil circuit recloser is isolated and by-passed.



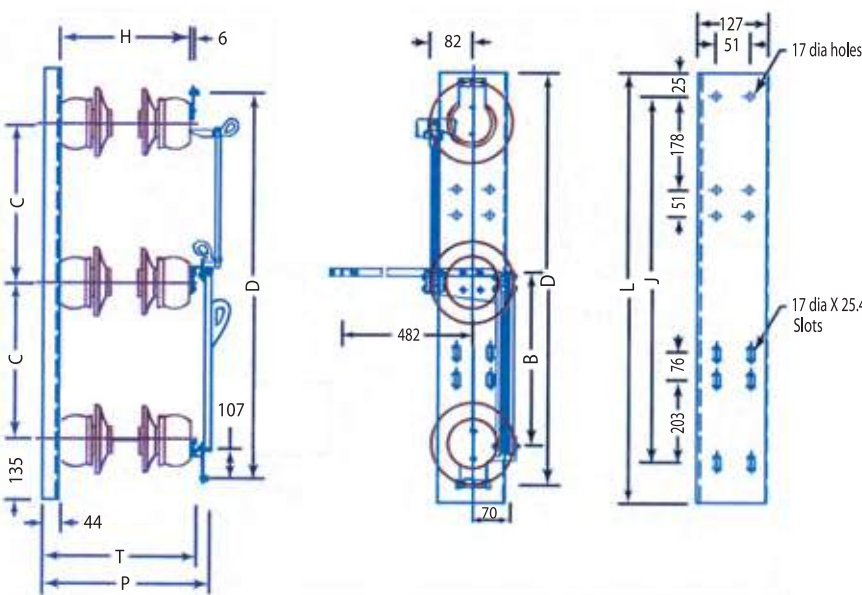
**Fused disconnect and companion switch combination**

**FUSE DISCONNECT SWITCH**

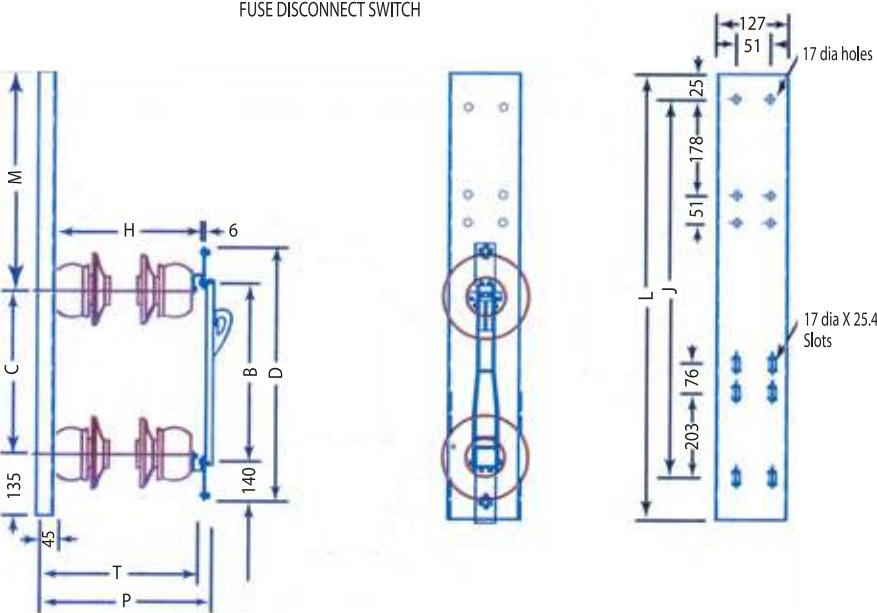
MAX DESIGN KV	FUSE CONT. AMP	BIL KV	ALL DIMENSIONS ARE IN MM REFERENCE ONLY								APPROX NET WT. KG	FUSE INTERRUPTING CAPACITY- kA	
			B	C	D	H	J	L	P	T		SYM	ASYM.
15.5	100	110	416	381	978	254	940	1003	333	308	46	7.1	10.0
15.5	200	110	416	381	978	254	940	1003	333	308	46	7.1	10.0
25.8	100	150	492	457	1130	356	1092	1156	435	409	62	7.1	10.0
25.8	200	150	492	457	1130	356	1092	1156	435	409	62	7.1	10.0

**COMPANION SWITCH**

MAX DESIGN KV	FUSE CONT. AMP	BIL KV	ALL DIMENSIONS ARE IN MM REFERENCE ONLY										APPROX NET WT. KG.
			B	C	D	H	J	L	M	P	T		
15.5	600	110	400	381	660	254	940	1003	487	375	343	25	
25.8	600	150	476	457	737	356	1092	1158	654	476	444	36	



FUSE DISCONNECT SWITCH



COMPANION SWITCH

ALL DIMENSIONS ARE IN MM

**FEATURE**

- All current carrying parts are copper bar.
- Silver washers between blade assembly and hinge.
- Truss type blade assembly.
- Positive blade latch.
- Tinned terminal pads.
- 90° field removal blade stop.

**BENEFITS**

- Uniform strength and conductivity with no hidden defects.
- Washers act as a bearing.
- Assures proper blade alignment during closing.
- Prevent nuisance openings and opening under fault conditions.
- Easy opening.
- Accommodates either bronze or aluminium terminals.
- Stop pin can be removed if 180° blade travel is required.

**TYPE :** EVR BY-PASS

**VOLTAGE :** 15.5kV and 25.8kV

**CURRENT :** 1200 ampere continuous.

**MOMENTARY :** 61,000 amperes in closed and by-pass positions.

**BIL :** 110kV and 150kV BIL

**PURPOSE :** As a Voltage Regulator By-Pass

**CONTACTS :** Reduced area---high pressure---silver overlay to silver plated copper.

**INSULATORS :** Suitable characteristics available upon request.

**BASE :** Galvanized structural steel channel.

**TERMINAL PADS :** ANSI standard four hole, tinned to accept copper or aluminium terminals.

**OPERATION :** The 1200A Regulator By-Pass Switch is a two pull sequence operated switch. For assured ease of operation under all switching conditions, the blade structure of the 1200-ampere switch is divided into two mechanically- interlocked assemblies for enforced sequence operation, thus minimizing the possibility of operational error. Opening the left-hand blade of the switch moves the by-pass blade into the by-pass position, by-passing and partially disconnecting the regulator. Opening the right-hand blade completes the disconnecting sequence and interrupts the regulator exciting current.

1200 ampere switches are equipped with the Arcrupter expulsion interrupting device, which has sufficient ampere interrupting capacity for interruption of the regulator exciting current with no exposed arcing. While the means for interrupting exciting current is mounted on right hand blade for mechanical reasons, the common terminal for the series and shunt coils may be connected to either disconnect blade.

**EXPANSION JOINTS :** On 1200 ampere switches to prevent misalignment due to expansion and contraction of heavy, rigid conductor, it is suggested that expansion joints be used.

**SURGE PROTECTION :** Surge Protectors are available and provide economical surge protection when mounted across the line terminals of the by-pass switches.

**APPLICATION :** Applicable to all regulators that can be set on neutral for the switching operation. This includes all single-phase and three-phase types, *except three-phase induction regulators.*

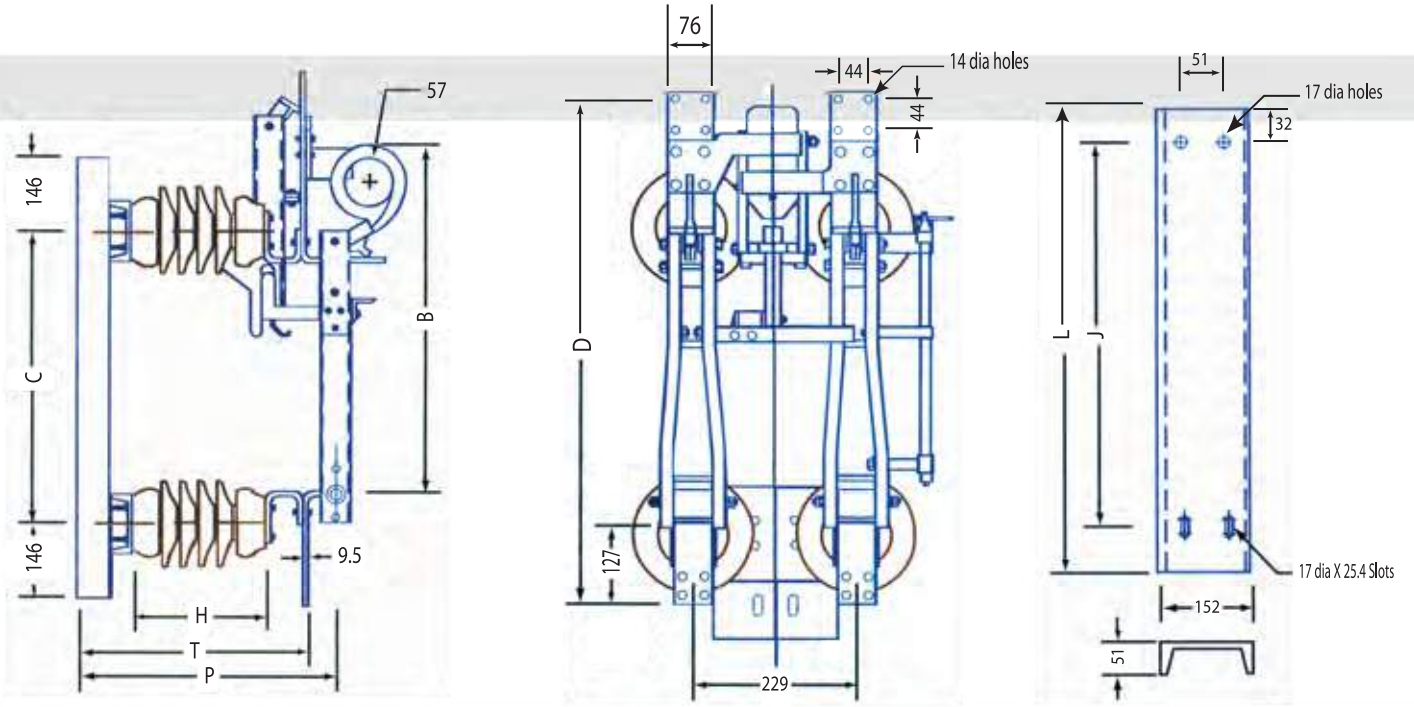
**BENEFITS :**

- Minimizes the possibility of operator error.
- Single pull both by-passes and disconnects the regulator or reconnects them to the line.
- Minimize the operating effort of these heavy duty switches.
- Interrupts the regulator exciting current and prevents arcing, damage to the switch contacts when disconnecting the regulator.
- Increases contact pressure and minimizes the possibility of contact damage when subjected to high fault current.

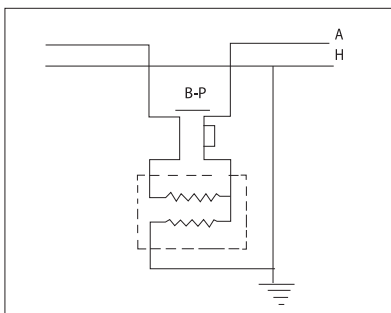
**VOLTAGE REGULATOR BY-PASS SWITCH**

**DIMENSION AND ORDERING INFORMATION**

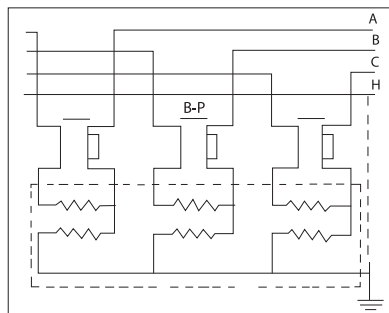
MAX DESIGN KV	AMPS. CONT.	BIL KV	ALL DIMENSIONS ARE IN MM REFERENCE ONLY								APPROX. NET WT KG
			B	C	D	H	J	L	P	T	
15.5	1200	110	438	381	721	254	610	686	476	429	84
25.8	1200	150	514	457	797	356	686	762	578	530	105



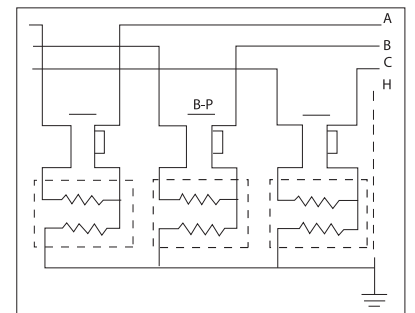
ALL DIMENSIONS ARE IN MM



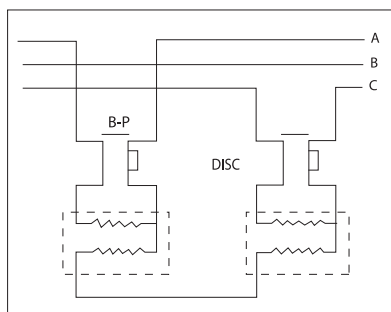
1 single phase regulator  
Single phase-2 wire



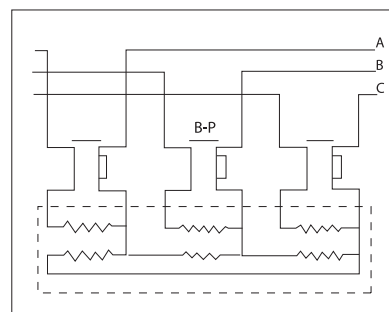
One 3 phase step regulator  
3 phase-wye-3 or 4 wire



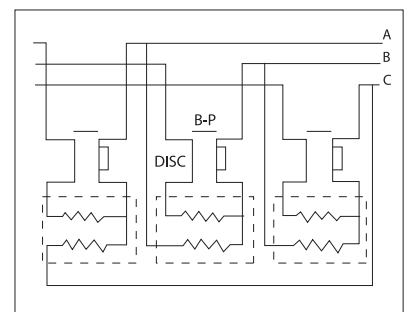
3 Single phase regulators  
3 phase-wye-3 or 4 wire



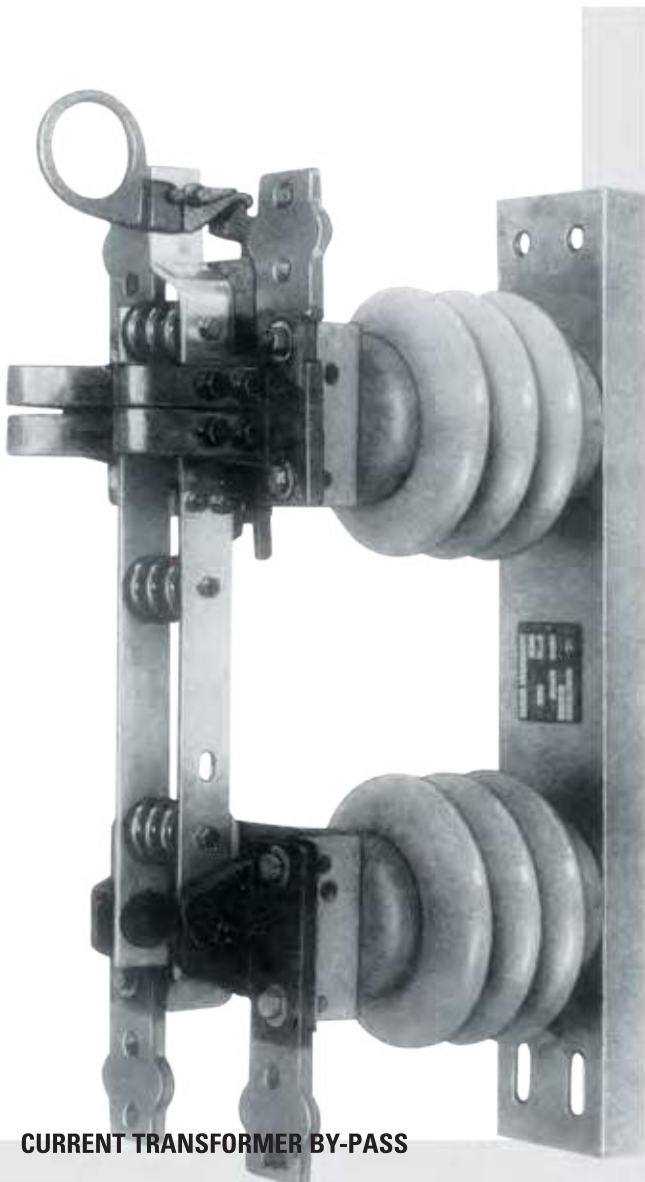
2 Single phase regulators  
3 Phase-open delta 3 wire



One 3 phase step regulator  
3 Phase-delta-3 wire



3 Single phase regulators  
3 Phase-delta-3 wire



CURRENT TRANSFORMER BY-PASS

**TYPE :** ECT BY-PASS

**VOLTAGE :** 15.5, 25.8, 38.0 and 72.5kV

**CURRENT :** 600 ampere continuous.

**MOMENTARY :** 40,000 amperes in closed position, 30,000 amperes in by-pass position

**BIL :** 95kV, 110kV, 200kV and 350kV.

**PURPOSE :** Current transformer By-Pass

**JAW CONTACTS :** Reverse loop-high pressure-silver plated copper.

**HINGE CONTACTS :** Reduced area--high pressure-- silver plated copper to silver plated high conductivity bronze.

**INSULATORS :** Suitable characteristics is available upon request.

**BASE :** Galvanized structural steel channel.

**TERMINAL PADS :** ANSI standard two hole, tinned to accept copper or aluminium terminals.

**APPLICATION :** For by-passing and disconnecting current transformers without load dropping and service interruption.

**OPERATION :** One pull on the 600A pull ring puts it through its proper and automatic switching sequence of by-passing the current transformer and disconnecting the transformer from service.

#### FEATURE

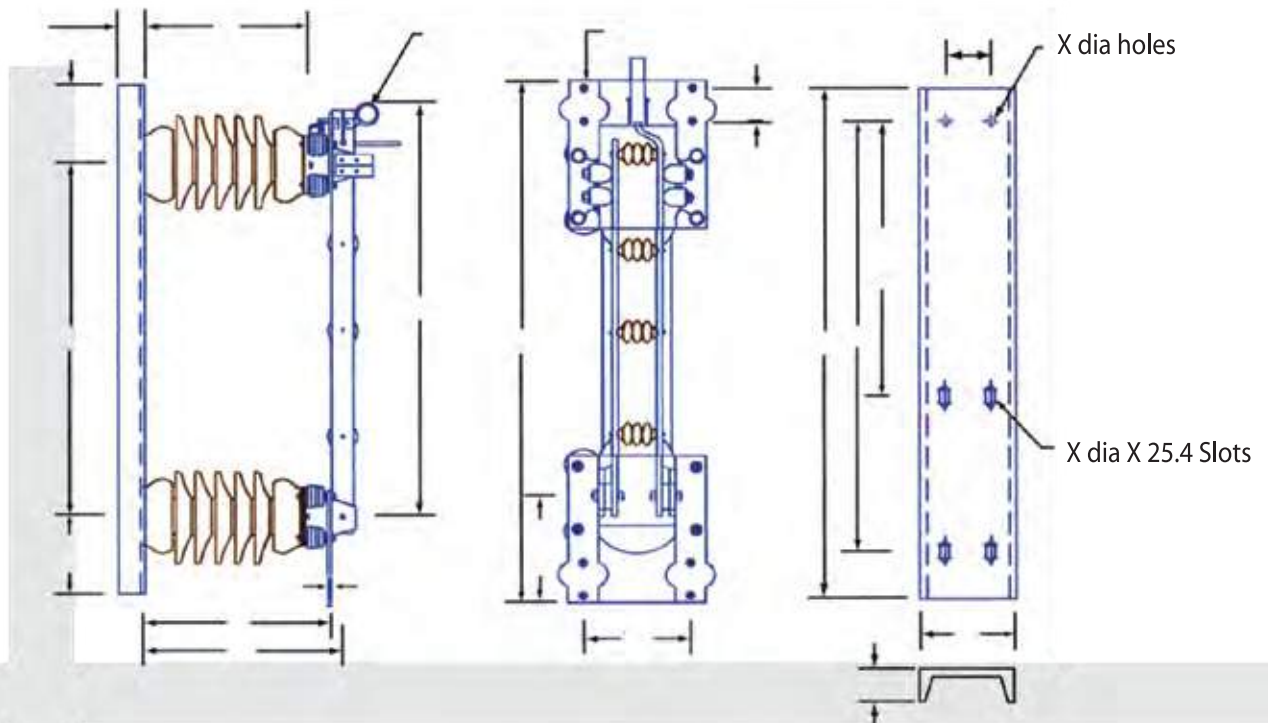
- Sequenced, make before break operation, both 600 & 1200 ampere ratings.
- Single pull operation of 600 ampere ratings.
- 2-pull operation of 1200 ampere ratings.
- Reverse loop contacts on 600 ampere ratings.

#### BENEFITS

- Minimizes the possibility of operator error.
- Single pull both by-passes and disconnects the current transformer or reconnects them to the line.
- Minimize the operating effort of these heavy duty switches.
- Interrupts the exciting current and prevents arcing, damage to the switch contacts when disconnecting.
- Increases contact pressure and minimizes the possibility of contact damage when subjected to high fault current.

**DIMENSION AND ORDERING INFORMATION**

MAX DESIGN KV	AMPS. CONT.	BIL KV	ALL DIMENSIONS ARE IN MM REFERENCE ONLY												APPROX. NET WT KG
			A	B	C	D	F	H	J	L	P	T	X	Y	
15.5	600	110	41	565	381	663	51	254	610	686	394	375	14	102	43
25.8	600	150	41	641	457	740	51	356	673	749	495	476	14	102	56
38.0	600	200	44	794	610	892	51	457	838	914	600	581	17	127	89
72.5	600	350	51	1251	1067	1349	76	762	1295	1372	911	892	17	152	132



**TERMINAL- SURGE PROTECTOR**



4-Hole-Cable or Pipe  
Conductor Range  
#4 soild 3/4" IPS



2-Hole-Cable  
Conductor Range  
#6 soild 397.5 MCM ACSR, 500  
MCM Copper or 556.5 Aluminium

The Surge Protector, which is connected across line terminals of Regulator By-Pass disconnect switch, protects the regulator and switch from high voltage surges.

**Switch Rating**  
8.3, 15.5 or 25.8kV



আস্থা শতভাগ



আস্থা শতভাগ

096 96 62 83 42

[www.technopowerbd.net](http://www.technopowerbd.net)

e-mail: [technopowerbdltd@gmail.com](mailto:technopowerbdltd@gmail.com)

**CORPORATE OFFICE:**

Baitul Khair, 48/A-B,  
Purana Paltan,  
Dhaka - 1000, Bangladesh

**FENI OFFICE:**

Nokshi Rokeya Tower  
306 S. S. K. Road,  
Feni, Bangladesh

**UAE OFFICE:**

Techno Industrial Centre  
W.L.L., P.O. Box 10098  
Kingdom of Bahrain.  
Cell: +97334247032



**HOTLINE:**

**01707 08 22 44**  
**01707 08 22 55**

**SALES & SERVICE:**

+ 88 01714 07 83 42  
+ 88 01714 07 83 43  
+ 88 01714 07 83 47  
+ 88 01714 07 83 48  
+ 88 01714 07 83 49  
+ 88 01714 07 83 50  
+ 88 01714 07 83 51  
+ 88 01714 07 83 52  
+ 88 01714 07 83 53  
+ 88 01714 07 83 54

**FACTORY:**

Banagram, Teghoria  
South Keranigonj, Bangladesh  
**WIRE HOUSE**  
2279, Newazbagh, 13No Road  
Khilgaon, Dhaka, Bangladesh

